

Entering a Serial Number into the ColdFusion 9 Administrator

Posted At : May 3, 2011 8:45 PM | Posted By : Josh Adams

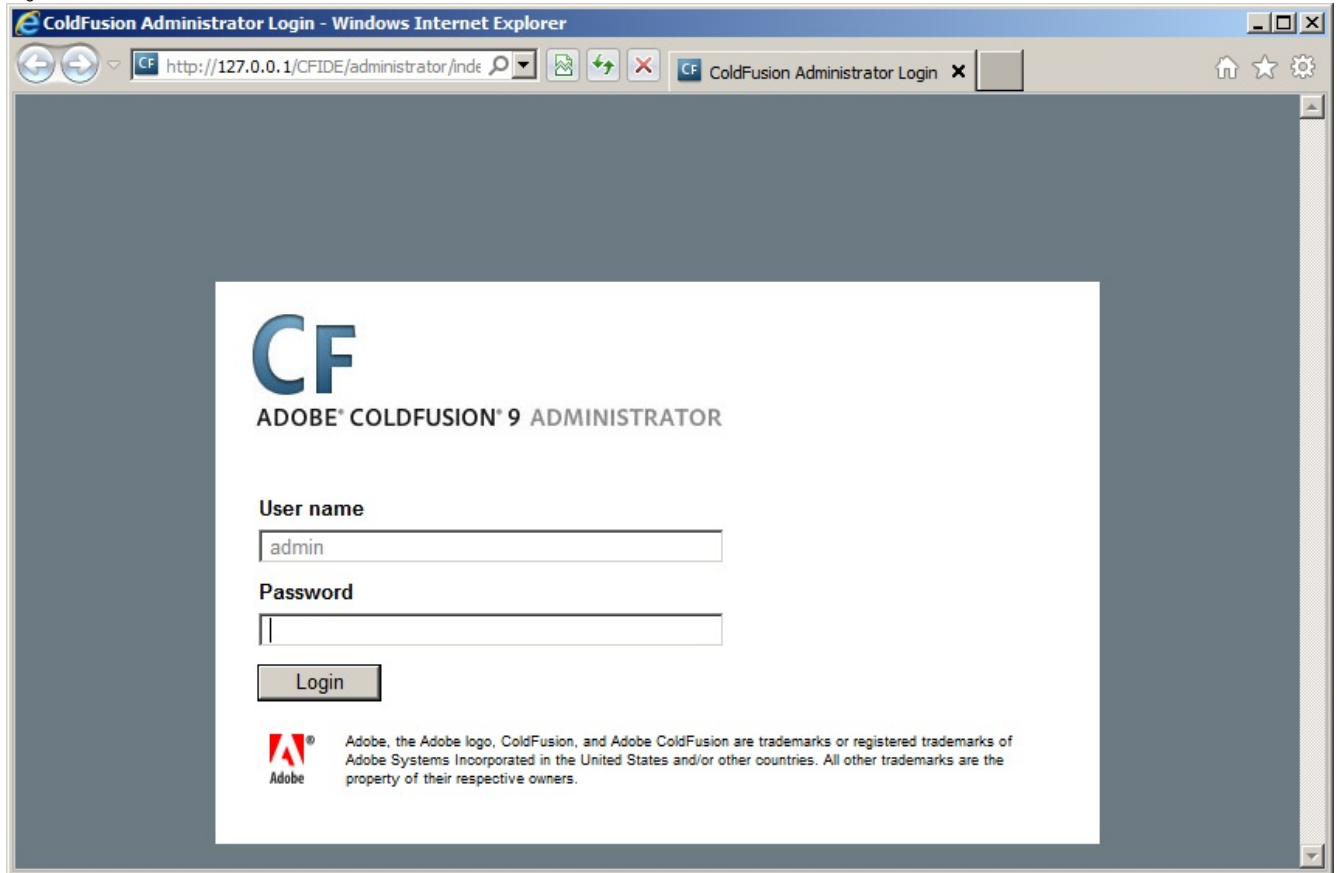
Related Categories: Adobe, ColdFusion

Although this post is written for ColdFusion 9, the majority of information in this post applies to most releases of ColdFusion.

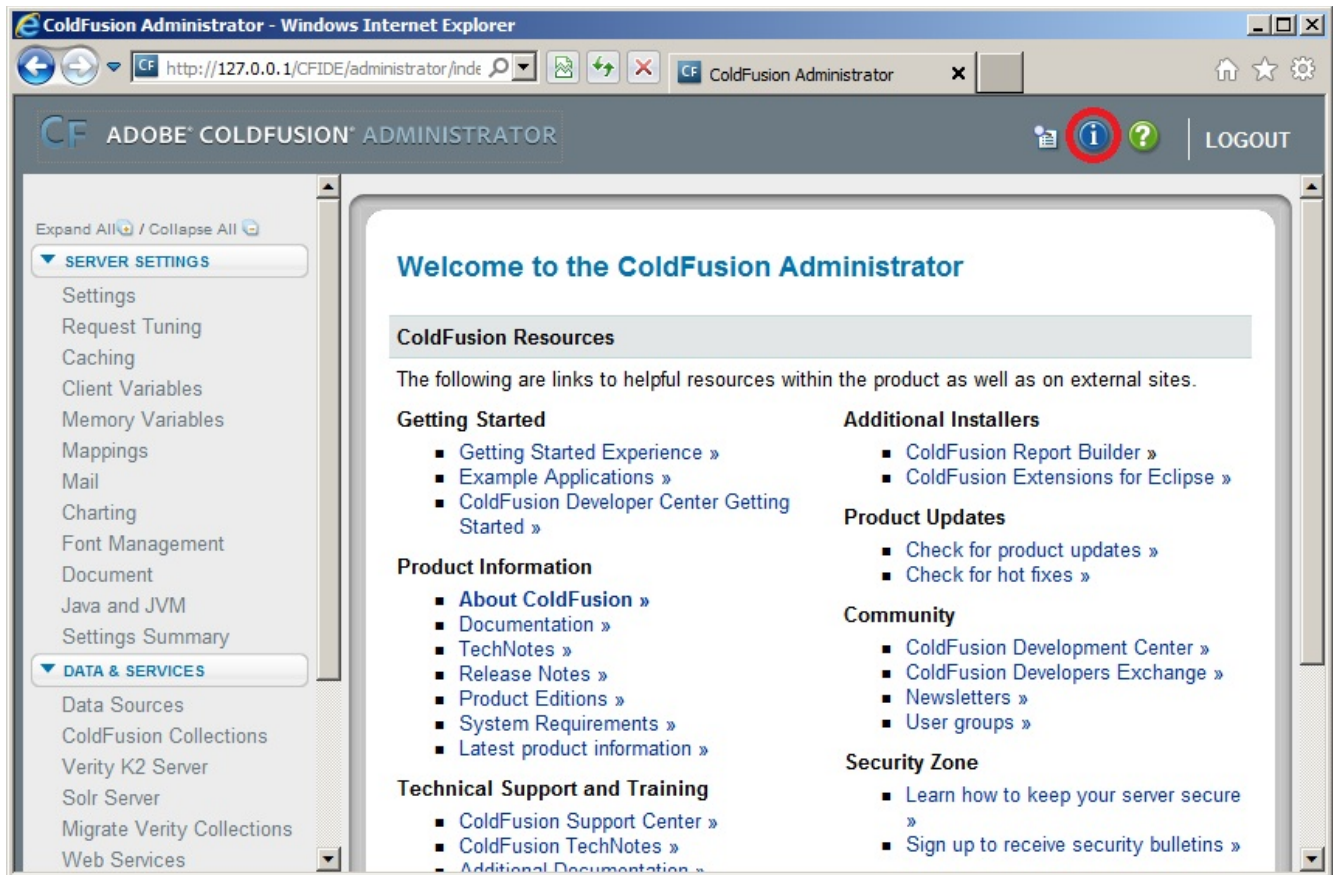
When you install ColdFusion 9, you can (but are not required to) enter your serial number (sometimes also referred to as a license key) during the installation (there's one caveat to this: there's a known issue with the 64-bit Linux installers not accepting ColdFusion 9 Standard serial numbers; see the related post listed below for more information). I'm not going to cover that in this post because there's no need: you just put your serial number in when prompted. What I'm going to cover here is entering a serial number into the ColdFusion 9 Administrator; you might need to do this for reasons including, but not limited to, not entering it during installation of ColdFusion 9.

Okay, so here we go:

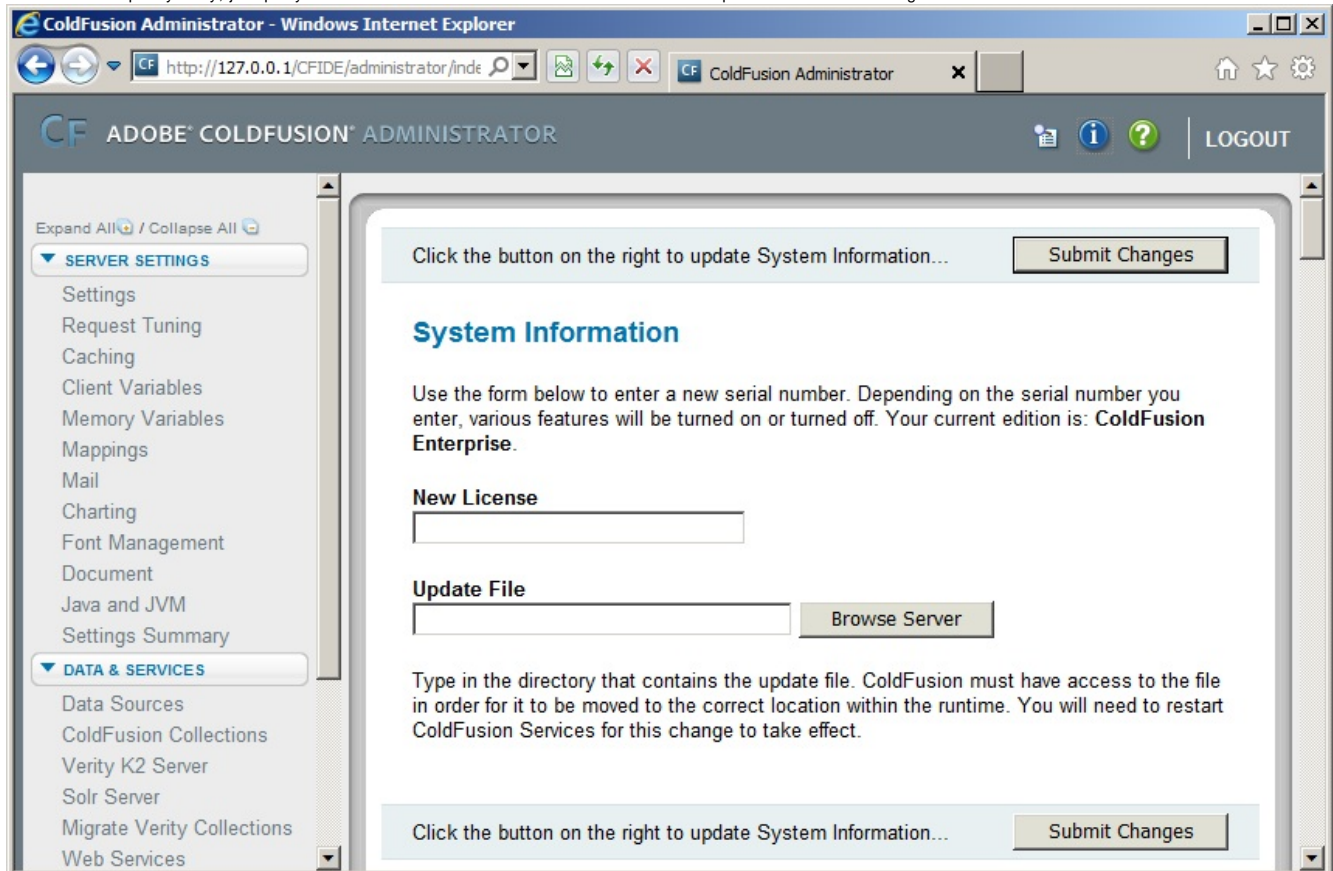
1. Log into the ColdFusion Administrator:



2. Once you're logged in, click the System Information icon in the upper right; in the screenshot below, I've circled it in red:



3. From there it's pretty easy; just put your serial number in the New License text box then press the Submit Changes button:



4. That's it! The page will refresh and you can scroll down and see the information on your Edition of ColdFusion and the serial number you just entered (I've redacted mine in the screenshot below for reasons I think are fairly obvious):

ColdFusion Administrator - Windows Internet Explorer

http://127.0.0.1/CFIDE/administrator/index.cfm ColdFusion Administrator

ADOBE® COLDFUSION® ADMINISTRATOR

Expand All / Collapse All

SERVER SETTINGS

- Settings
- Request Tuning
- Caching
- Client Variables
- Memory Variables
- Mappings
- Mail
- Charting
- Font Management
- Document
- Java and JVM
- Settings Summary

DATA & SERVICES

- Data Sources
- ColdFusion Collections
- Verity K2 Server
- Solr Server
- Migrate Verity Collections
- Web Services

Click the button on the right to update System Information... **Submit Changes**

[About ColdFusion »](#)

System Information

Server Details	
Server Product	ColdFusion
Version	9,0,1,274733
Edition	Enterprise
Serial Number	
Operating System	Windows Server 2008 R2
OS Version	6.1
Adobe Driver Version	4.0 (Build 0005)
JVM Details	
Java Version	1.6.0_17
Java Vendor	Sun Microsystems Inc.
Java Vendor URL	http://java.sun.com/
Java Home	C:\ColdFusion9\runtime\jre
Java File Encoding	Cp1252
Java Default Locale	en_US